

**COMPRESSOR**

Displacement (cm <sup>3</sup> )	16.14
Diameter (mm)	31.19
Stroke (mm)	21.13
Net Weight (Kg)	12.9
Oil type	ISO VG 22 ESTER
Oil charge (cm <sup>3</sup> )	400

**MOTOR**

Approximate Power (CV)	3/8
Voltage/Frequency (V/Hz)	200V 50Hz
Voltage range (V)	170-242
Code	61.595
Type	CSIR
Phase number	1 PH
Locked rotor current (A)	23.0
Main W. resist. at 25°C (Ω)	2.96
Start W. resist. at 25°C (Ω)	14.99

**APPLICATION**

Application	High back pressure
Refrigerant	R134a
Evaporating (°C)	-15 to 10
Expansion	Capillar/Valve
Comp. cooling	Fan cooled
Max. ambient temp. (°C)	43

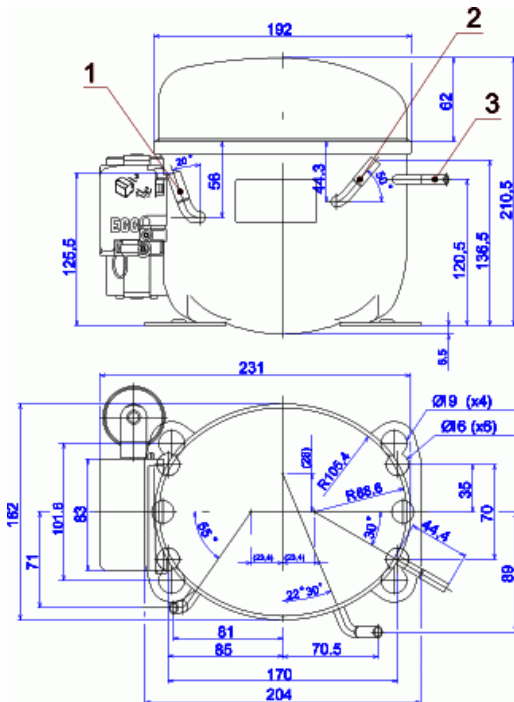
NOMINAL PERFORMANCE	CYCLE C	CYCLE D
Cooling capacity (kcal/h)	1036	1240
Input power (W)	660	690
EER (kcal/Wh)	1.56	1.79
COP (W/W)	1.82	2.09
Current (A)	4.27	4.40

**TEST CONDITIONS**

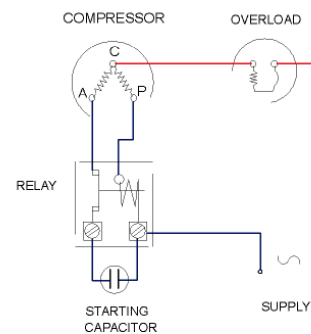
Evaporating temp. (°C)	5.0	7.2
Condensing temp. (°C)	55.0	55.0
Liq.t. entering expan. (°C)	55.0	46.0
Ambient t. and return (°C)	32.0	35.0
Tens/Freq (V/Hz)	200V 50Hz	200V 50Hz

**ELECTRICAL COMPONENTS**

Relay	2014 166.	
Pick-Up (A)	11,00	
Drop-Out (A)	9,35	
Protector	MRA38134	T0348/G.
Current (A)	15.8	15.4
Time check (seg)	7.5-14	7.5-14
Disc temp. (Open/Close) (°C)	105.0 / 52.0	105.0 / 52.0
Starting capacitor (μF/V)/F/V)	72- 88 / 330	

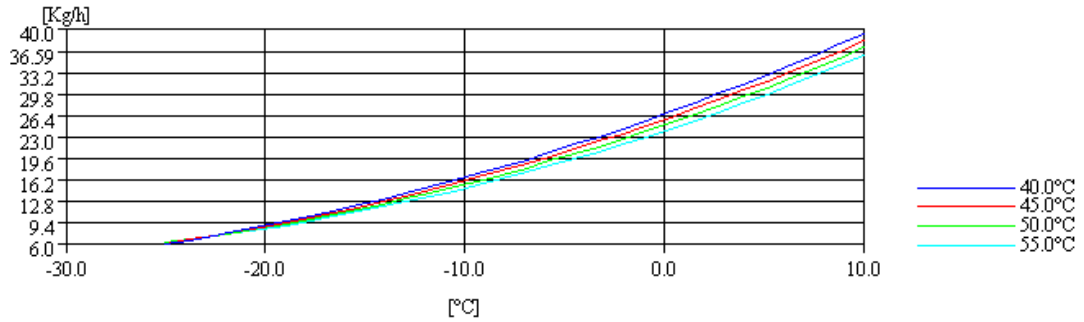
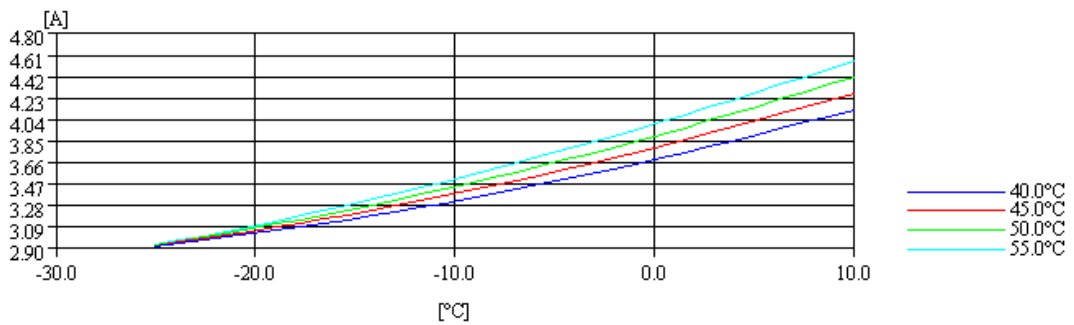
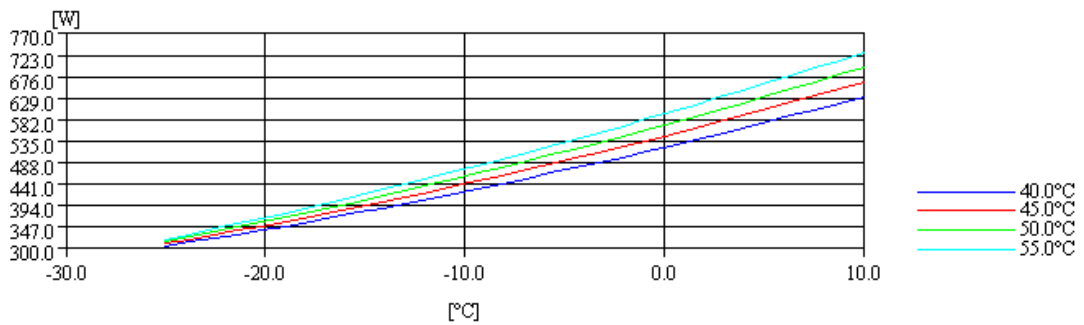
**DIMENSIONS AND ELECTRICAL DIAGRAM**


DESIGNATION	INTERNAL DIAM. (MM)
1	Suction/Service 8,1
2	Service/Suction 8,1
3	Discharge 6,5

**CSIR**


**TEST CONDITIONS**

Voltage/frequency	200V 50Hz
Ambient t. and return	35 °C
Liq.t. entering expan.	Subcooling 9 K

**MASS FLOW**

**INTENSITY**

**CONSUMPTION**

**COOLING CAPACITY**
